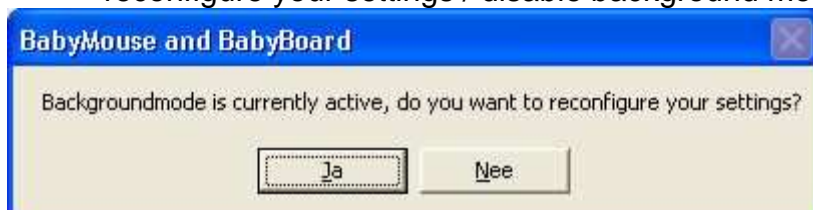


BasicMouse BasicBoard & BasicBrowser Help



1 General

- Run in background mode: when selected BasicMouse doesn't show the main screen but directly runs in stealth mode (in the systray) with the chosen configuration. When you exit BasicMouse (or press CTRL-ALT-SHIFT-C) you will be given the possibility to reconfigure your settings / disable background mode.



- Run at windows startup: checking this box puts a registry key in HKEY_CURRENT_USER\Software\Microsoft\Windows\CurrentVersion\Run, each time you start the computer (with the same user account) BasicMouse will automatically launch.
- Auto Save last configuration: Auto save last configuration saves the (mouse) keys you choose to an xml file and loads them back the next time you start the program, in combination with 'Run at windows startup' you can even put the program in your 'startup items' this way forcing the computer to start with a pre-defined keyboard and mouse configuration!



- Exit password: by setting an exit password (minimum of 5 characters) you make sure users aren't able to bypass the mouse and keyboard restrictions with this password check.

2 Mouse

- Disable left, right, middle mouse or scroll buttons or select "*Merge mouse buttons*" so all 3 mouse buttons (left - right and middle) act like a left mouse button. It doesn't matter which button is pressed the computer will always think it's the left mouse button!

3 Keyboard



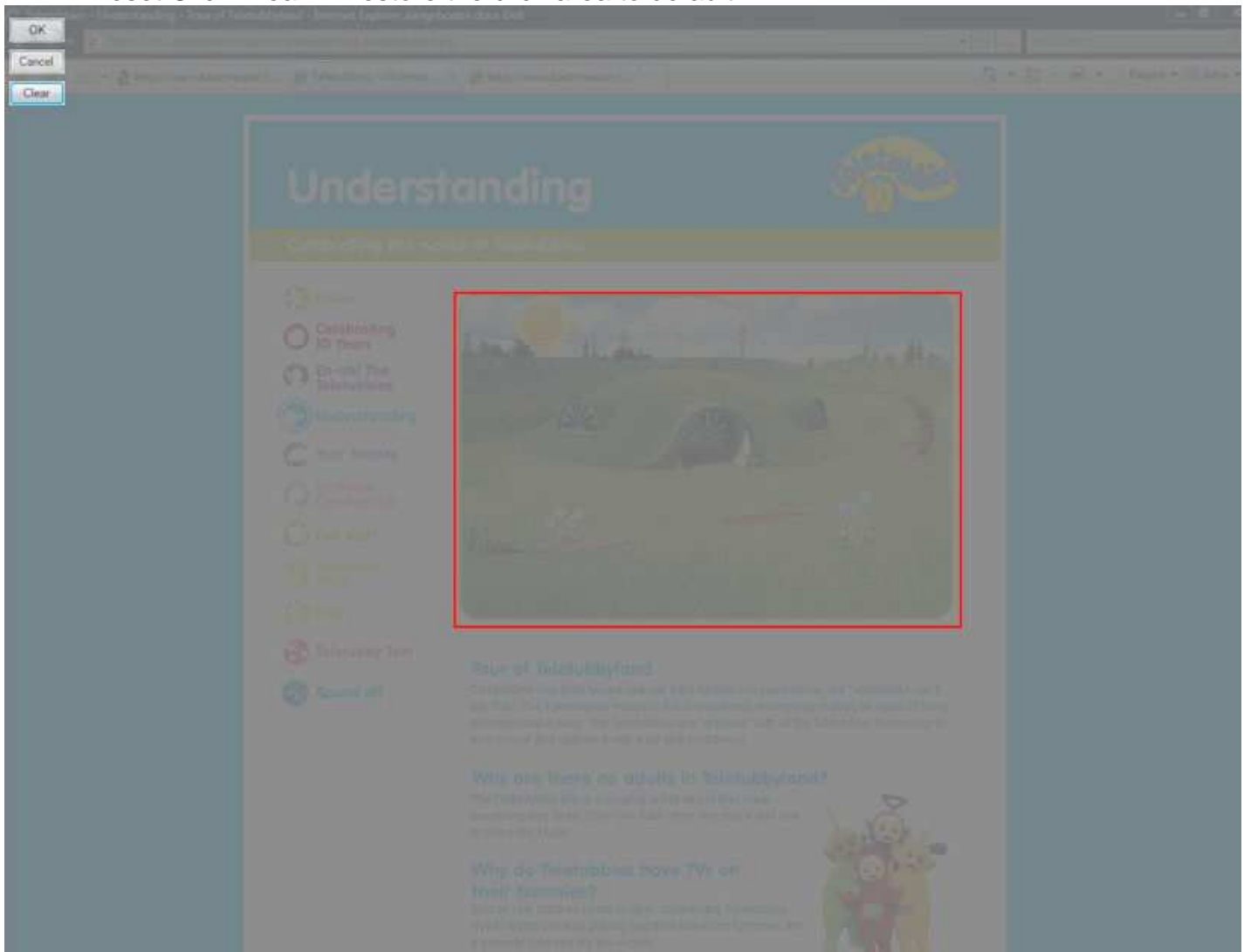
- Disable alt-tab, Windows key , menu key , **or all keys on the keyboard.** This allows you to quickly disable the most common keys for instance the 'annoying' windows keys which pop up when you don't want them!

4 Mouse cursor settings

- Change the mouse cursor to something more appealing, there are 25 different cursors in the pro version.

5 Mouse Click Area

- If you click "Set Click Area" a transparent form pops up in which you can drag a rectangle box to specify the area in which you want to allow mouse clicks, this is extremely useful when playing flash games on the internet!
- Reset Click Area will restore the click area to default.



6 School / Company / Your logo

- If you want to add the logo of for instance your school or company just click on the picture box in the bottom right corner.

7 BasicMouse Toolbar

- Activate Full version: after reception of the registration data, click here to unlock the full version without limitations.
- Change Logo: change the logo in the bottom right corner.
- Start BasicMouse.
- Buy Online: visit the web store of our e-commerce partner and buy a registration key for the full version of BasicMouse (instant key delivery).
- Bug Report: if you encounter a minor or major bug or if you have a request please use the Bug Report button.

8 Change resolution

- Quickly change your computer's resolution to a more appropriate resolution for your activities.

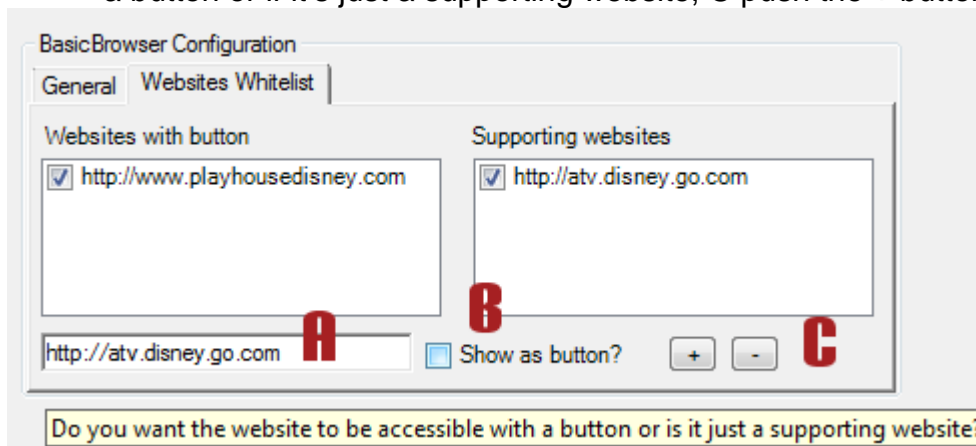
9 BasicBrowser Websites

- Check 'Autorun BasicBrowser' if you want BasicBrowser to automatically start when you start BasicMouse.
- With the plus and minus buttons you add or remove the websites to which you want to grant access in the BasicBrowser

Please note: BasicBrowser looks at the 'base' URL to see if you allowed it, sometimes when you e.g. click on a game link on website A this link redirects to website B, this might not be obvious but BasicBrowser will not let you surf to it because it's base is different than the one you allowed!

You can test this in a regular web browser to see where this mouse click leads you to...

It's easy as ABC: A enter the website you want to grant access to, B decide if it has to show up as a button or if it's just a supporting website, C push the + button to add it to the list.



In the example above we grant access to playhousedisney.com but since the url redirects you to atv.disney.go.com we have to grant access to that site also. We do not want 2 buttons however, that's why we don't check the 'Show as button' checkbox when adding the atv.disney.go.com website!

10 Proxy Server

- If you have a proxy server check the 'use proxy server' checkbox and enter the proxy server in the following format: myproxy.com:myport

11 'Auto Run' program

- If you want to 'auto run' a program after BasicMouse launches, check the run program box and browse for a filename

12 Security Settings

- Shortcut Keys active: Check this if you want to use the escape keys:
 - CTRL – SHIFT – ALT – Q: Quit
 - CTRL – SHIFT – ALT – C: Reconfigure BasicMouse
 - CTRL – SHIFT – ALT – E: Enable keys temporarily
 - CTRL – SHIFT – ALT – D: Disable keys temporarily (after enabling them)
 - CTRL – SHIFT – ALT – R: Resolution changer
- Disable Task Manager: this will put an entry in the registry which removes the Task Manager from the CTRL – ALT – DEL screen, requires a reboot to become active. **Use it with caution!**
- Disable Start Menu: after starting BasicMouse this will immediately remove the start button from your desktop.

13 Save multiple configurations

- Starting from version 5.84 BM allows multiple configurations (e.g. per kid / per student).
 - Enter a new configuration name
 - Click on the plus sign (configuration is added to the list)
 - Select the new configuration
 - Set preferences, websites, etc
 - Click save config
 - The selected configuration automatically is the configuration with which BM starts up!

BasicBrowser Component



1 Websites Buttons

- The websites you added in the BasicMouse screen will be shown here as buttons.

2 Lock Buttons

- Click the 'lock screen' button if you want to disable the scroll bars / lock the screen.
- Click the 'lock browser' button to disable the websites buttons, this way you make sure the user can not accidentally 'surf away'.. (once locked it will show 'Unlock')

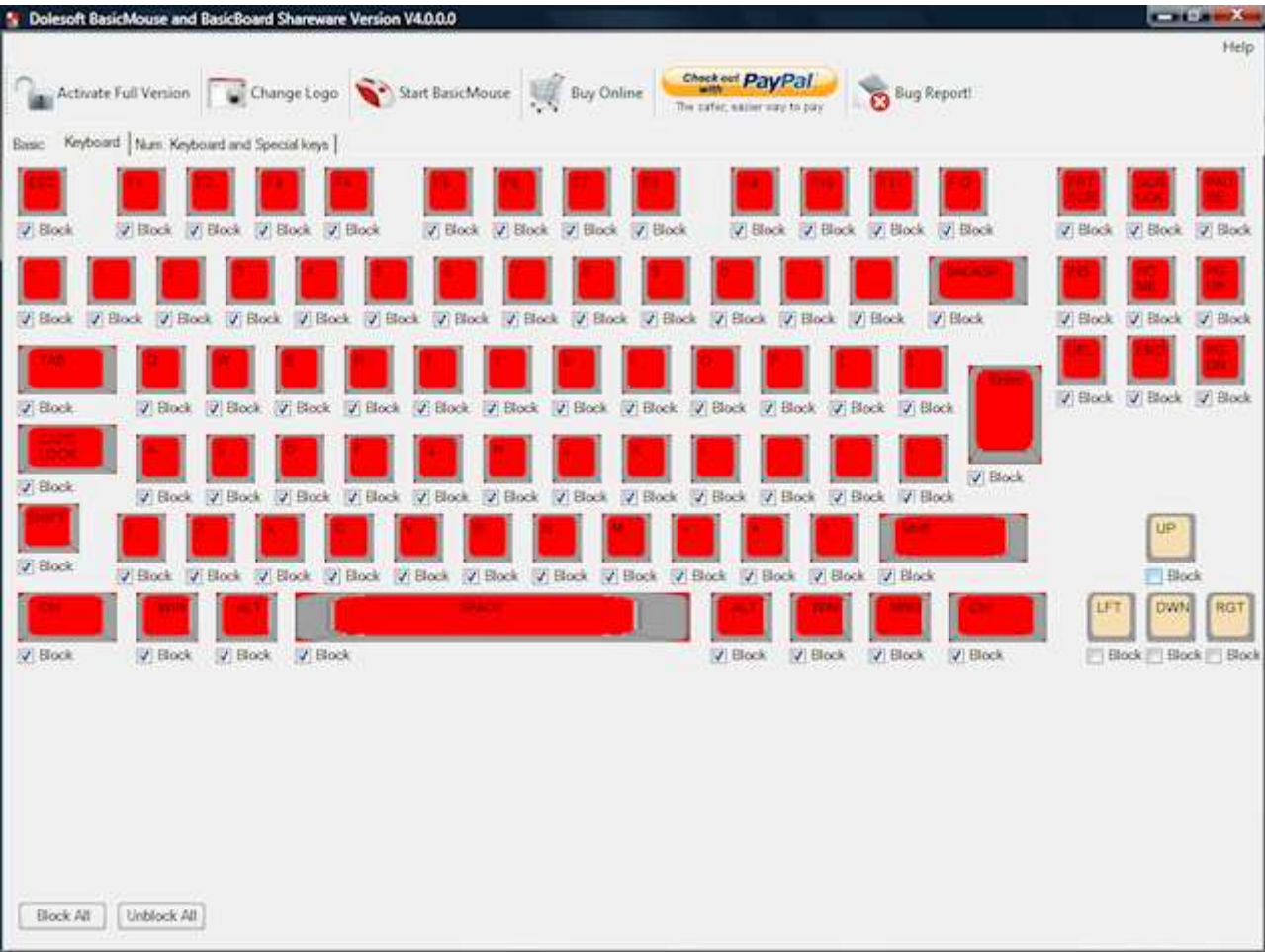
3 Force Topmode

- Checked BasicBrowser will always be the 'topmost' window

4 Screen Resolution

- Change resolution

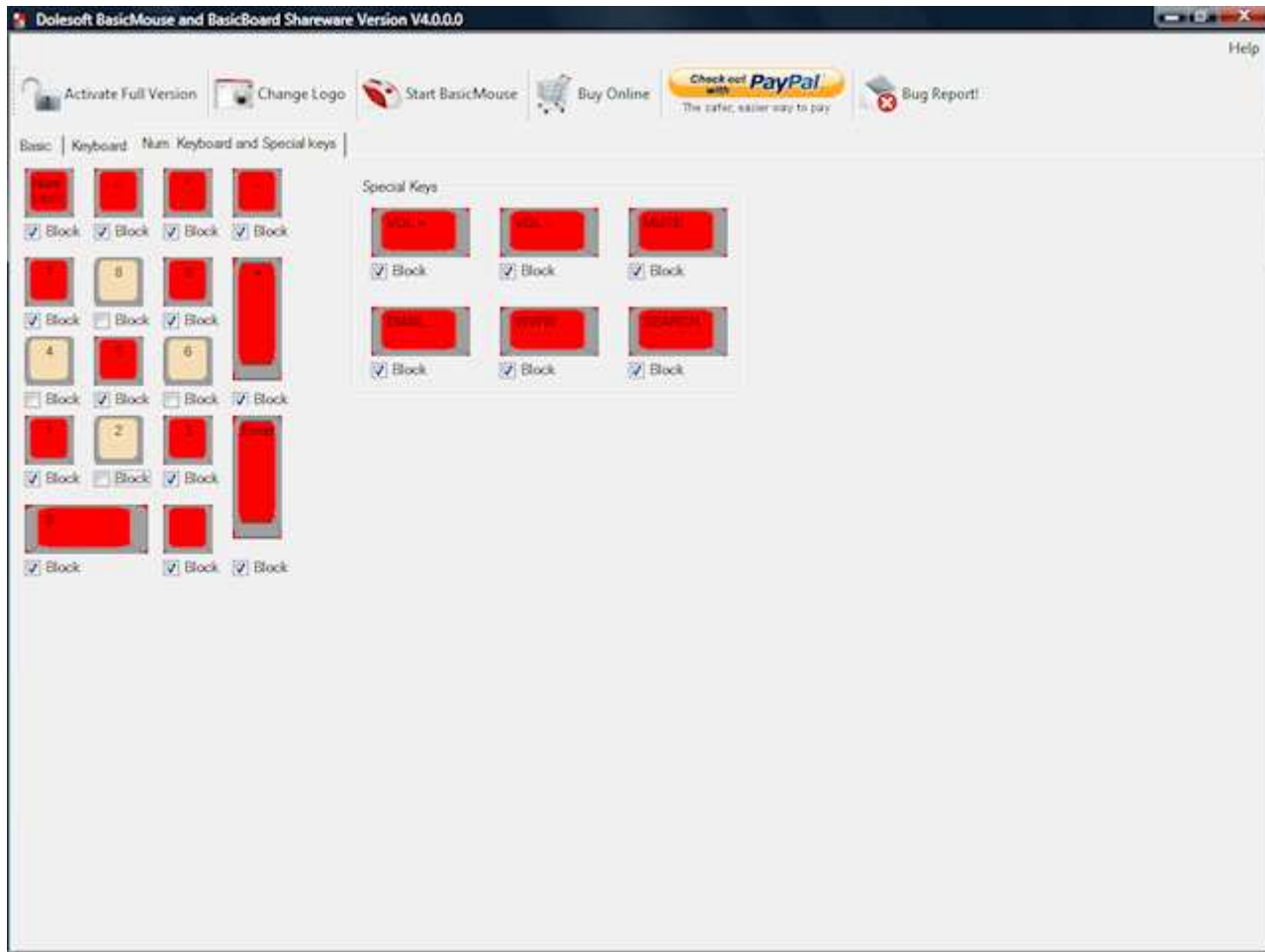
Keyboard page



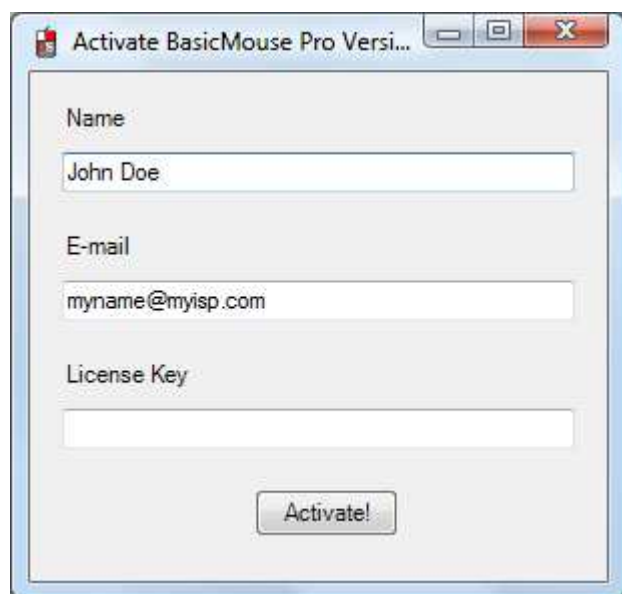
*In the screenshot above all keys except the arrow keys are disabled. You can click **block all** or **unblock all** but make sure you know what you are doing!*

Keyboard page II

- The last tab page shows you the numeric keyboard and the multimedia keys like browser, e-mail and find. In the example below all keys but the arrow keys on the numeric keyboard are disabled.



Activate the Pro version



Activate BasicMouse Pro Versi...

Name
John Doe

E-mail
myname@myisp.com

License Key

Activate!

Please enter the exact same information you used when you registered.

Important: Should you ever find yourself in a position unable to control the computer due to mouse and keyboard restrictions set by BasicMouse, you can always use CTRL-ALT-DEL and kill the BasicMouse session... (unless you disabled the task manager)